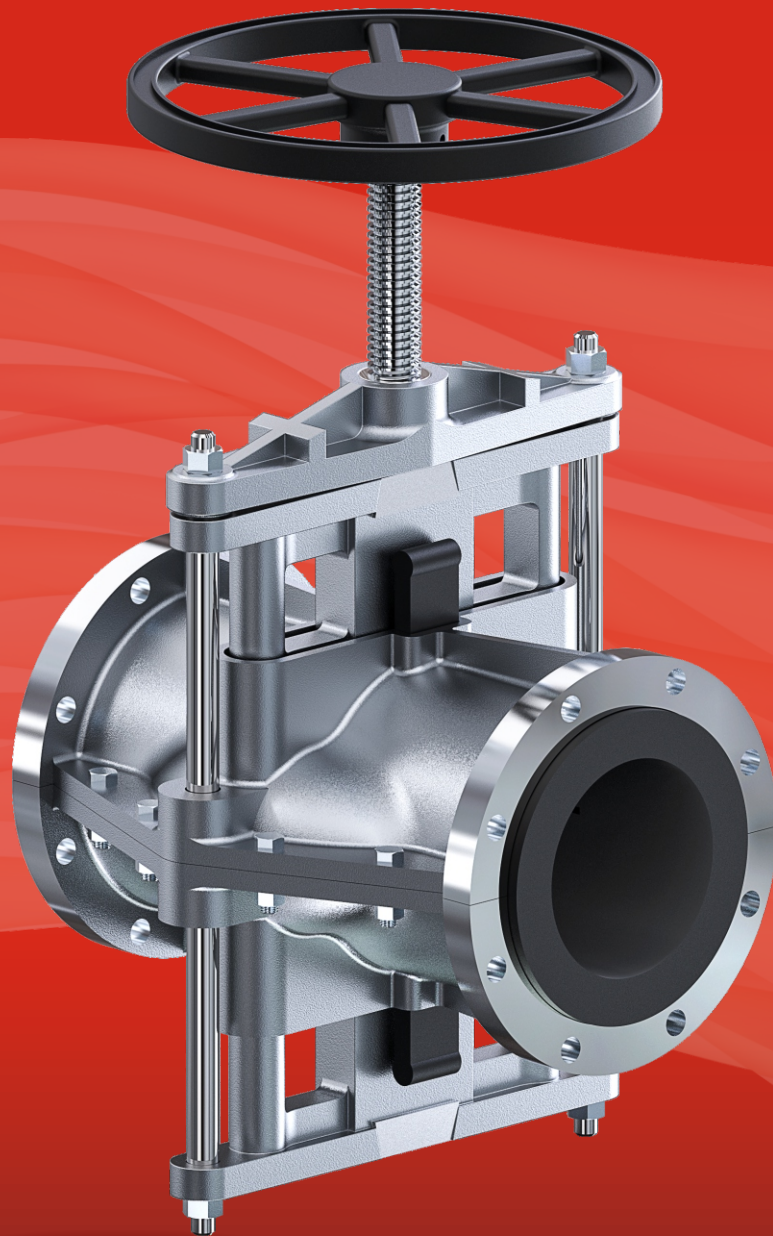


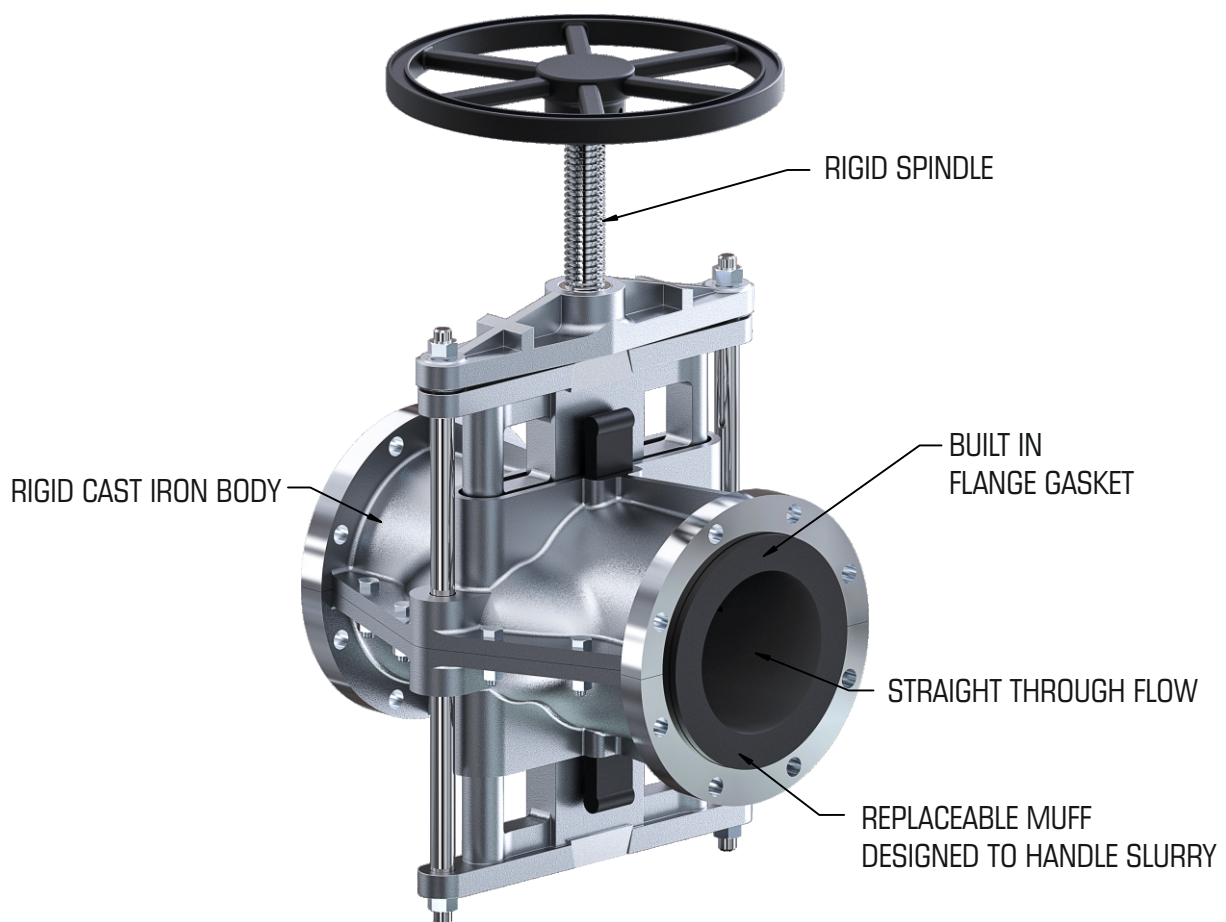
# PINCH VALVE



**AKAY INDUSTRIES PVT LTD**

# FEATURES

- Absolute closure even on trapped solids
- Faultless sealing properties
- Controlled regulation of flow
- Perfect roundness & straight through flow
- No liquid hammering
- No metallic friction to cause wear
- Built in flange gasket
- No glands to be kept in condition



**Size Range :**

· DN15 - DN300

**Temperature :**

· 150° C

**End Connection :**

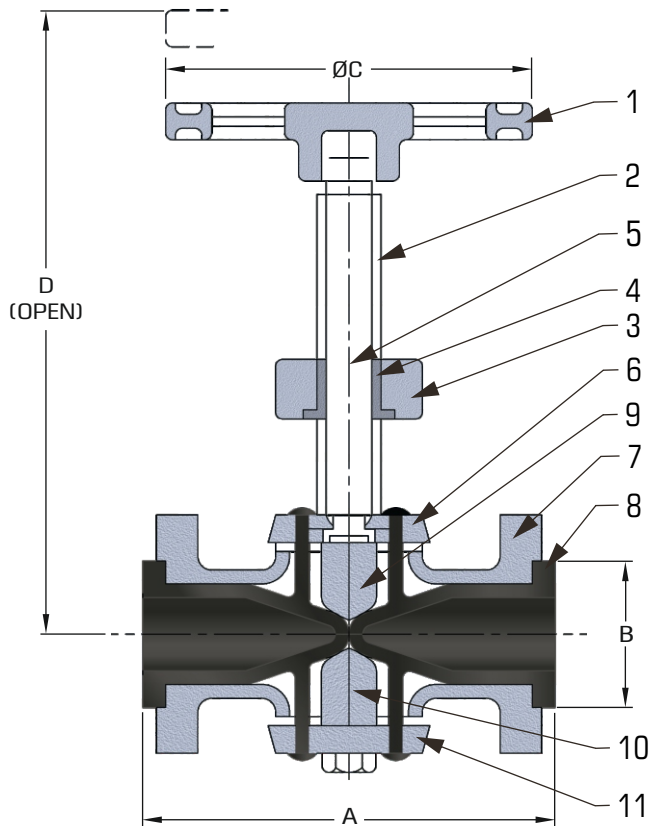
· Flanged to suit BS10 Table D

**Pressure Rating :**

· As per P-T Rating

**“BETTER... BY DESIGN!”**

# ENGINEERING DATA

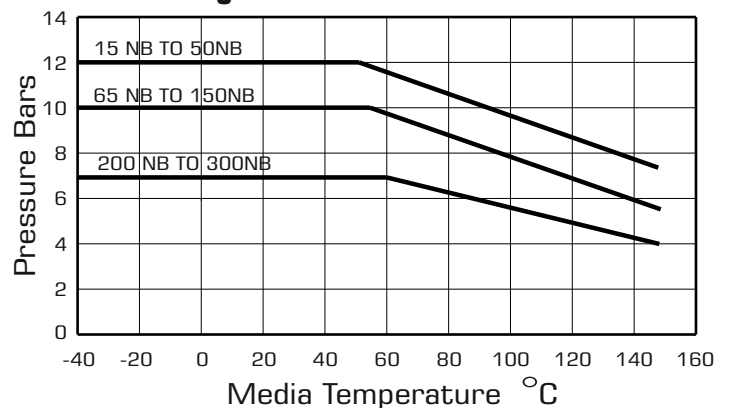


## Dimensions :

VALVE SIZE	A	B	C	D	WEIGHT kg
DN15	95	45	70	128	2.5
DN20	106	50	84	161	3.5
DN25	120	60	124	172	5.4
DN32	130	68	140	186	7.0
DN40	152	80	140	215	10.0
DN50	175	98	164	255	13.2
DN65	205	116	196	270	18.0
DN80	242	122	196	324	23.1
DN100	305	158	306	425	41.4
DN125	356	186	306	460	80.0
DN150	455	215	356	570	86.0
DN200	605	300	550	670	180.0
DN250	772	350	610	800	310.0
DN300	850	400	700	1090	450.0

NO	QTY	PART NAME	MATERIAL
1	1	HAND WHEEL	CI
2	1	SPINDLE	316,304,410,EN8
3	1	BRIDGE COLLAR	CI/NYLOCHEM
4	1	SPINDLE NUT	GUN METAL
5	2	SIDE ARM	EN8,316
6	1	CLAMP (UPPER)	GUN METAL
7	1	BODY	CI,ALUMINIUM
8	1	MUFF	BROMO BUTYL, BUNA EPDM, NATURAL RUBBER, NEOPRENE, VITON, HYPALON
9	1	PINCH BAR (UPPER)	CI
10	1	PINCH BAR (LOWER)	CI
11	1	CLAMP (LOWER)	ALUMINIUM

## P-T Rating



## TEMPERATURE RANGE OF ELASTOMER MUFF

ELASTOMER	TEMPERATURE RANGE °C
Bromo Butyl	-20 TO 160
Buna	-20 TO 80
EPDM	-40 TO 130
Hypalon	-0 TO 100
Natural Rubber	-20 TO 70
Neoprene	-30 TO 80
Viton	-5 TO 150

## Seat test Pressure :

• Maximum working pressure as shown in P-T Rating

“BETTER... BY DESIGN!”

# INDUSTRIAL VALVES



Ball Valve



Butterfly Valve



Knife Gate Valve



Piston Valve



**AKAY INDUSTRIES PVT LTD**

CTS No: 611-612-1, STATION ROAD HUBLI - 580020 KARNATAKA - INDIA

TEL.: +91 (0) 836 2486001 / 02 • EMAIL: [business@akayind.co.in](mailto:business@akayind.co.in) • WEB: [www.akayind.co.in](http://www.akayind.co.in)